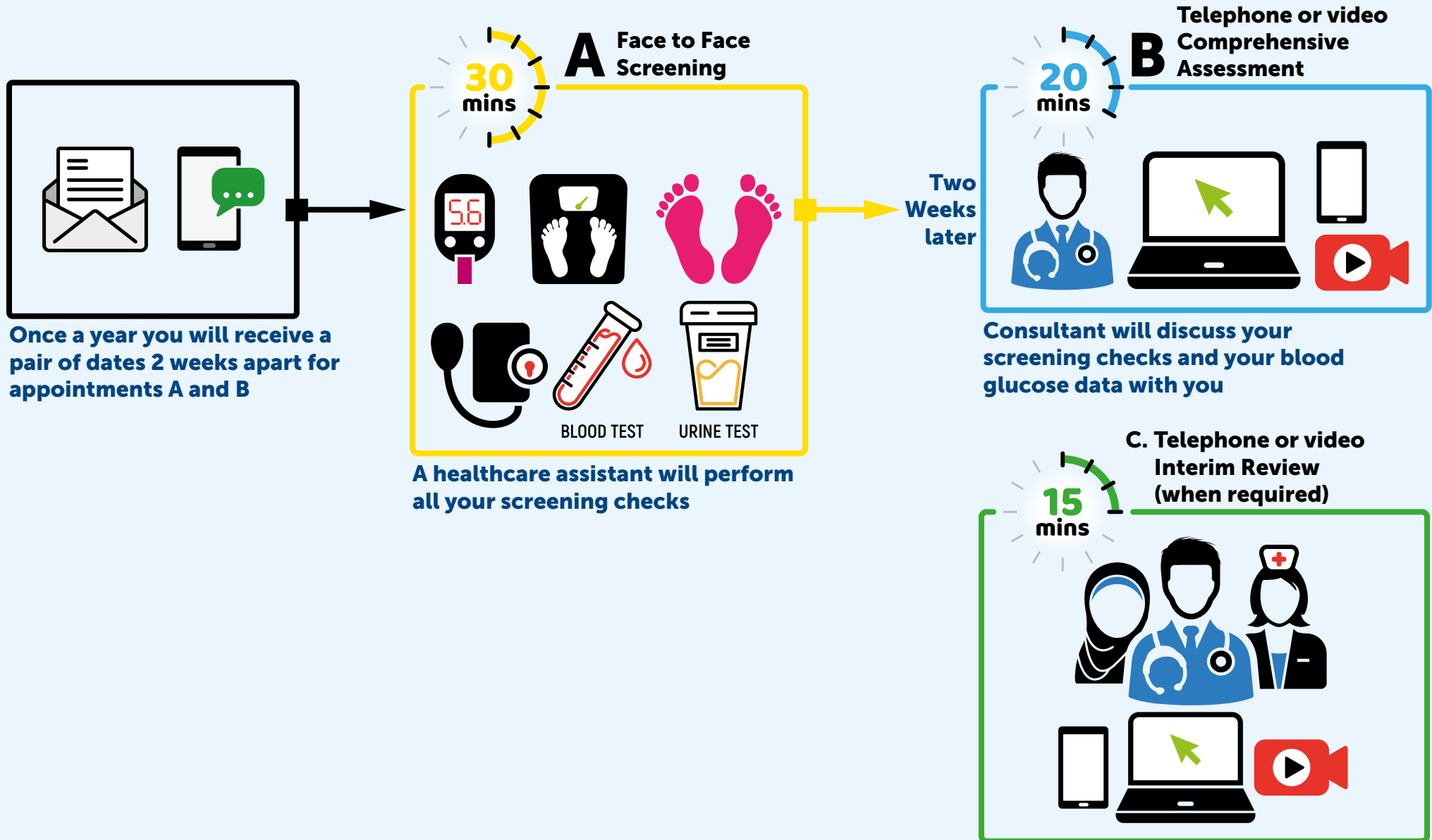


# TYPE 1 DIABETES

# New Appointments System



# Type 1 diabetes – explanation of infographic

## New Appointments System for Review with Consultant

This leaflet provides information on what will happen when type 1 diabetes services resume after the coronavirus lockdown. All existing appointments in 2020 and 2021 will be changed. More of your contact with us will be by telephone or video calls so that we can support social distancing.

For your once per year screening, you will receive a pair of appointments about 2 weeks apart.

- The first (A in the diagram) is a **face to face visit for measurements and samples only.**
- The second (B in the diagram) is a **telephone or video discussion with your consultant.**

Your screening checks (visit A) will be performed by a team of healthcare assistants. This will take about 30 minutes. Your appointment with the consultant (visit B) will happen about 2 weeks after the screening tests are done, so the results can be discussed with you and a plan agreed. The appointment with the consultant will be by telephone or video call and will last about 20 minutes.

We encourage you to reflect on your diabetes priorities and goals before the consultant review so that you can get the most out of the conversation. You can view your screening check history on My Diabetes My Way, if you don't already. We also encourage you to upload your

glucose data before the consultant review. Many of you already do this from home, but you will have the chance to upload it during the screening (visit A) if you cannot upload at home.

You will need to bring all your BG meters with you if you want to upload at the screening visit. If you use Libre, please ensure data is up to date on Libreview and linked to your clinic before your consultant review.

Pump users should also upload before consultant review (visit B). Details or help with uploading can be obtained by contacting your local type 1 diabetes hub by email (see below).

- Some people will need an interim appointment between their yearly checks but not everyone will need this (C in the diagram). The consultant will discuss this with you.

The diabetes nurses and dietitians will also be changing to telephone and video support. If you need to contact your diabetes team for clinical advice you can email:

- [gg-uhb.southglasgowdiabeteshub@nhs.net](mailto:gg-uhb.southglasgowdiabeteshub@nhs.net)  
for people who attend either the QEUH or Victoria Type 1 diabetes clinics
- [gg-uhb.northwestglasgowdiabeteshub@nhs.net](mailto:gg-uhb.northwestglasgowdiabeteshub@nhs.net)  
for people who attend the Gartnavel Type 1 diabetes clinics

Appointments will be sent out in batches only 6 weeks ahead. For queries on diabetes appointments or to change appointments please follow the instructions on your appointment letter.