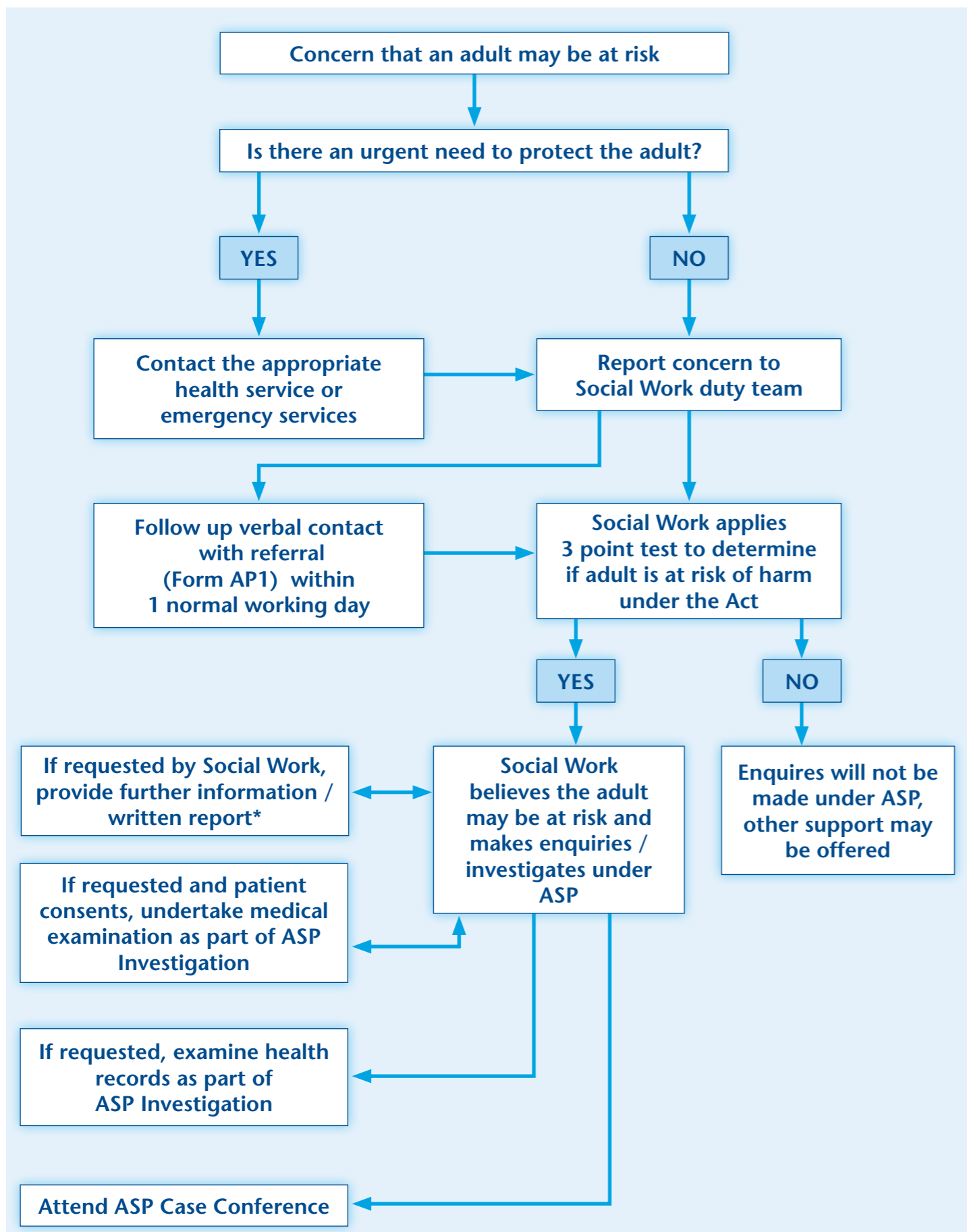


# Adult Support & Protection Guidance for Health Staff

## Act Against Harm



### Additional Information

Additional information on the responsibilities of health staff is available on the NHS Board's website: <http://www.nhsggc.org.uk> Type Adult Support and Protection into the search engine.

Under the Adult Support and Protection (Scotland) Act 2007, an adult is considered at risk if they meet all 3 points of the 3 point test:

- They are unable to safeguard their own wellbeing, property, rights or other interests
- They are at risk of harm; and
- They are affected by a disability, mental disorder, illness, physical or mental infirmity which makes them more vulnerable to harm than adults not affected in this way

Referrals should be made to the local authority in which the concerns came to light i.e. if a patient is in a Glasgow hospital but resides outwith Glasgow the referral is to Glasgow.

\* Health professionals holding records must act within their professional duties.

### Social Work Duty Teams – updates for wallchart

| Area                     | Email address  | Tel. No.      | Fax. No.   | Out of Hours  |
|--------------------------|--|---------------|--|---------------|
| Glasgow City             | <a href="mailto:socialcaredirect@glasgow.gov.uk">socialcaredirect@glasgow.gov.uk</a>                                     | 0141 287 0555 | 0141 276 1201  | 0300 343 1505 |
| Renfrewshire             | <a href="mailto:Adultservicesreferral.sw@renfrewshire.gcsx.gov.uk">Adultservicesreferral.sw@renfrewshire.gcsx.gov.uk</a> | 0300 300 1199 | 0141 886 3460<br>Text/SMS:<br>07958 010325               | 0300 343 1505 |
| East Renfrewshire        | <a href="mailto:adultprotection@eastrenfrewshire.gcsx.gov.uk">adultprotection@eastrenfrewshire.gcsx.gov.uk</a>           | 0141 451 0755 |  | 0300 343 1505 |
| East Dunbartonshire      | <a href="mailto:AdultProtection@eastdunbarton.gsx.gov.uk">AdultProtection@eastdunbarton.gsx.gov.uk</a>                   | 0141 355 2200 |  | 0300 343 1505 |
| West Dunbartonshire      | <a href="mailto:wdadult@wdc.gcsx.gov.uk">wdadult@wdc.gcsx.gov.uk</a>   |               | Dumbarton:<br>01389 737020<br>Clydebank:<br>01389 811760 |               |
| Inverclyde               | <a href="mailto:adult.protection@inverclyde.gcsx.gov.uk">adult.protection@inverclyde.gcsx.gov.uk</a>                     | 01475 715010  |  | 0300 343 1505 |
| <b>South Lanarkshire</b> |  |               |  |               |
| Hamilton Office          | <a href="mailto:swlohamilton@southlanarkshire.gcsx.gov.uk">swlohamilton@southlanarkshire.gcsx.gov.uk</a>                 | 0303 123 1008 |  |               |
| Rutherglen Office        | <a href="mailto:swlorutherglen@southlanarkshire.gcsx.gov.uk">swlorutherglen@southlanarkshire.gcsx.gov.uk</a>             | 0303 123 1008 |  |               |