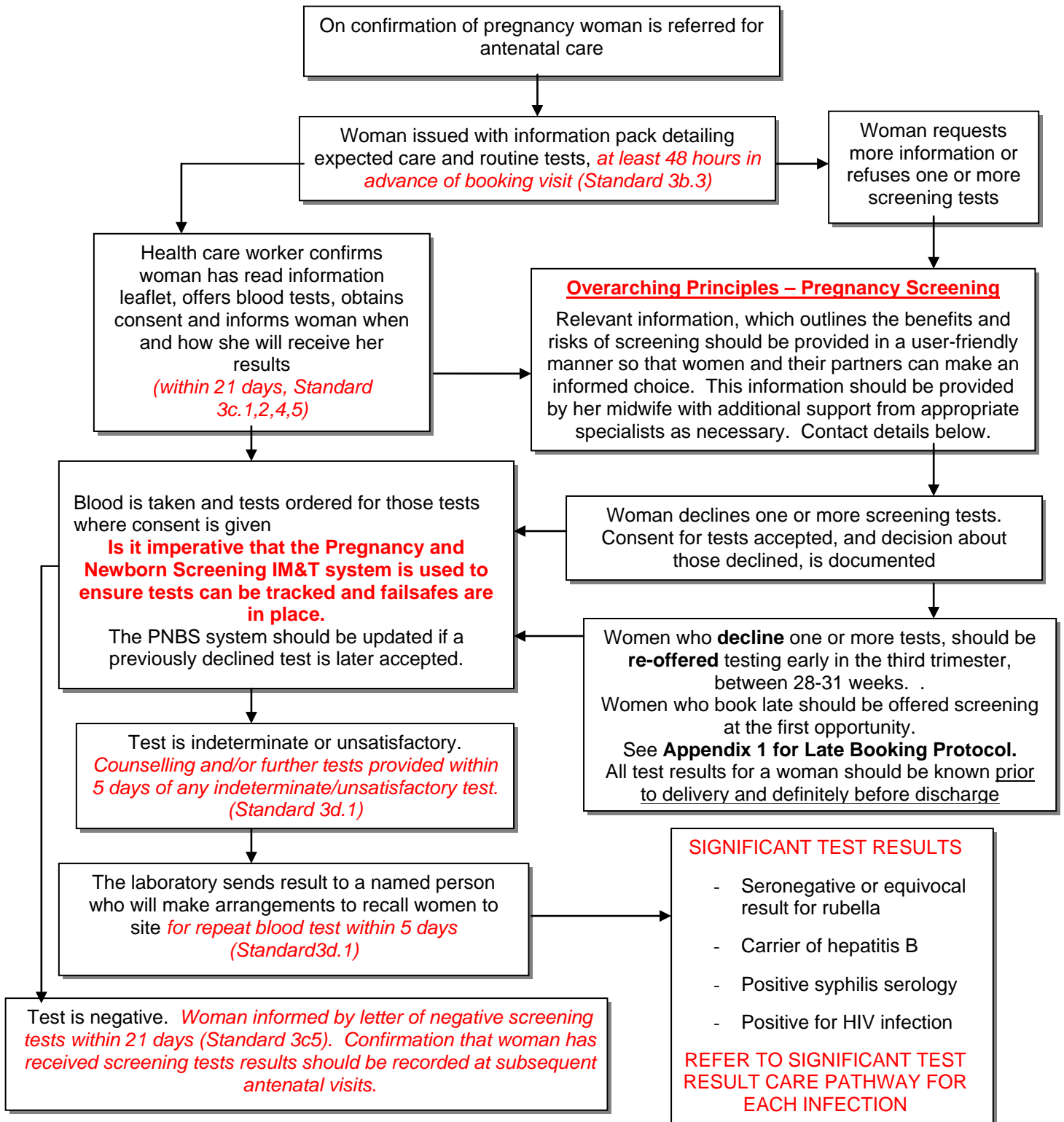


Offering Routine Antenatal Communicable Disease Screening Tests

"The primary aim of screening women for these conditions is to ensure a plan for treatment and management for affected individuals and their babies".

NHS QIS Clinical Standards, Pregnancy and Newborn Screening



N.B. If a woman feels she has been/continues to be at risk of exposure to HIV, she should be offered re-testing 3 monthly in pregnancy. If a woman develops symptoms of hepatitis or an STI she should be referred to the relevant professional (hepatologist/SHA) for appropriate assessment.

Special Needs in Pregnancy (SNIPs) –RAH – 0141 314 6199 or 0141 887 9111 then page 56311 **VOL** – 01389 817 270
IRH – 01475 504 833 **Glasgow** - 0141 221 5267 or 0141 211 5366 or 0141 211 5337 (secretary)

Sexual Health Advisors, Sandyford – 0141 211 8634
Counselling and Support Team (CAST), Brownlee Centre 0141 211 1089

Version No: V5.2
 Approved by: Communicable Diseases in Pregnancy Steering Group
 Date Approved: April 2011
 Next revision date: April 2012