

east pollokshields health & community care centre
public meeting
19th august 2013



anderson bell +christie

The proposal

The proposal is to build a purpose designed Health and Community Care centre that integrates NHS, social work and key partner services.

Two GP surgeries will be accommodated within the facility.
The principal participants in the project are NHS Greater Glasgow and Clyde (NHSGGC).

The following groups were identified as key stakeholders which will operate from the building.

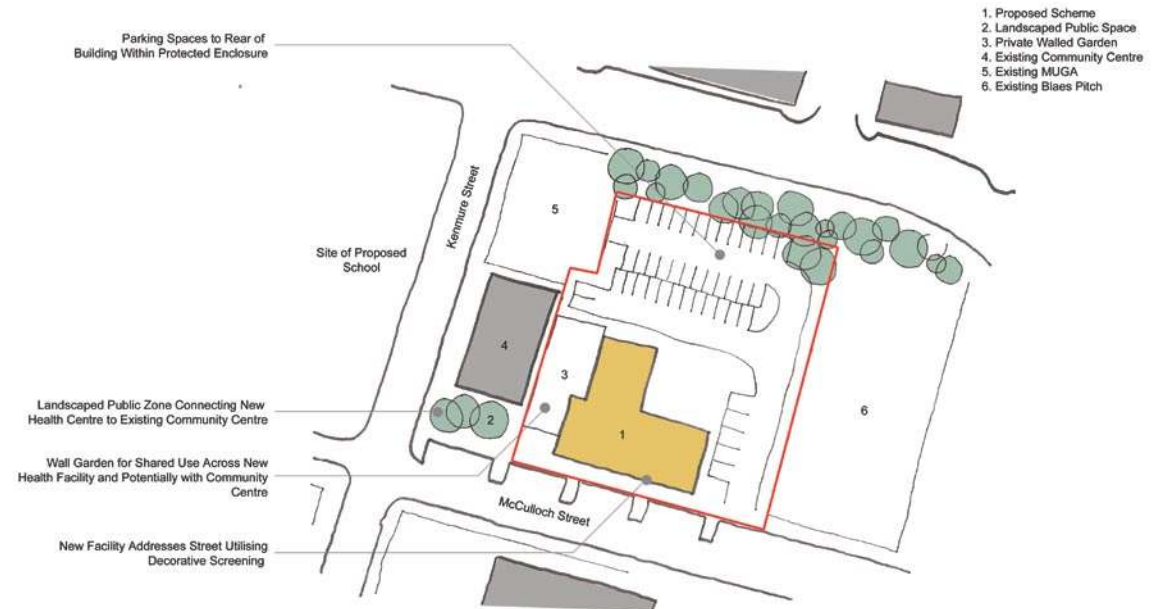
- Two GP Practices
- District Nurses
- Health Visitors
- Social Work
- Health Shop

Key facts:

- The Planning Application was lodged in July 2013.
- The contractor appointed is CBC.
- The cost of the development is £2.7M

The remaining programme for construction of the project is:

- Site start - February 2014
- Project Handover - October 2014.



Exterior views



Interior views

