



The new 14 floor South Glasgow adult hospital building is due to be completed by early 2015. It will be one of the largest acute hospitals in the UK and home to major specialist services such as renal medicine, transplantation and vascular surgery, with state-of-the-art Critical Care, Theatre and Diagnostic Services.

The new hospital will have 1109 beds, with each general ward consisting of 28 single bedrooms with en-suite facilities; this will assist in addressing hospital acquired infection (HAI), mixed sex, privacy and dignity issues. Each room will also have a large window onto the ward corridor to allow good line of sight between the staff and patients. To help staff deliver care, the new ward layout has special 'touch down' stations arranged at strategic points along ward corridors.

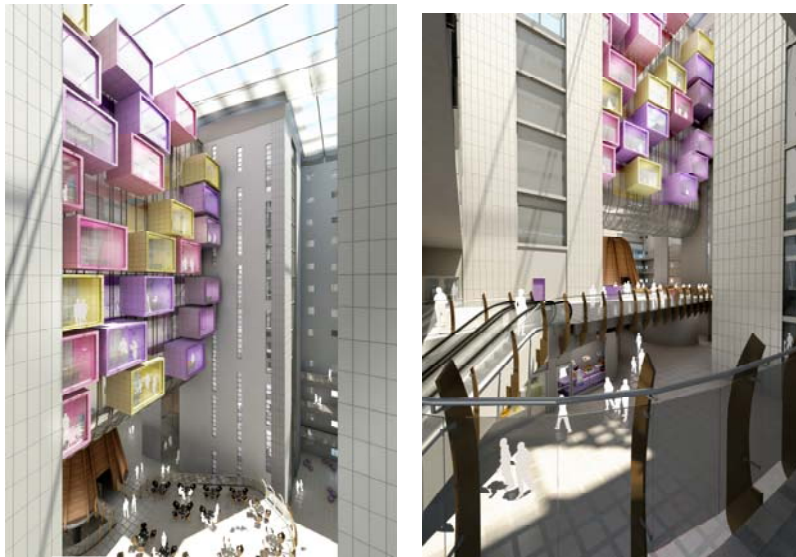
All bedrooms will be light and airy with large window offering views to the outside world. The bedrooms will provide a therapeutic and healing patient environment that is safe, clean, private, quiet and comfortable. The design will also provide areas for patients to meet and socialise, and the ward will have security entry to maximise security and safety.





***View of Main Entrance to Adult Hospital***

The atrium of the new hospital will house retail shops and a coffee shop. There will also be a large restaurant/coffee area on the first floor of the hospital with a balcony and views out onto the landscaped area in front of the hospital.



***Views of Atrium – Adult Hospital***



***View of landscaped campus***

The new adult hospital will be integrated with the children's hospital (albeit with separate functions and entrances).

A physical link for patients and staff is planned from the new hospitals into the Maternity and Neurosciences Institute building. The new hospitals will also be linked to the new laboratory build via an underground tunnel and pneumatic tube.